

LET'S CALL THE WHOLE THING OFF

MUSIC AND LYRICS BY
GEORGE GERSHWIN AND IRA GERSHWIN

BRIGHTLY

VERSE

B \flat G7(b9) Cm F7sus F7 B \flat Eb9(#11)



THINGS HAVE COME TO A PRET-TY PASS, OUR RO-MANCE IS GROW-ING FLAT, FOR

5 A7(#5) D9 G13 G7(#5) C11 C9 C7(b9) F13 F7#5



YOU LIKE THIS AND THE OTH-ER WHILE I GO FOR THIS AND THAT.

9 B \flat G7(b9) Cm F7sus F7 B \flat Eb9



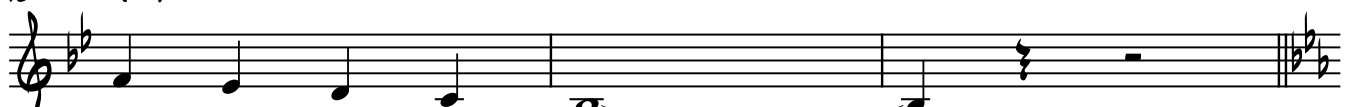
GOOD-NESS KNOWS WHAT THE END WILL BE; OH, I DON'T KNOW WHERE I'M AT... IT

13 F6 DM6/C C7(b9) F6



LOOKS AS IF WE TWO WILL NEV - ER BE ONE,

16 Cm7(b5) F7 B \flat B \flat 7 Gm B \flat 7



SOME - THING MUST BE DONE.

CHORUS

20 Eb Cm9 Fm7 B \flat 7(b9) Eb Cm9 Fm7 B \flat 7(b9)



S/A: YOU SAY EE - THER AND I SAY EYE - THER, YOU SAY NEE - THER AND I SAY NY - THER;
YOU SAY LAUGH - TER AND I SAY LAWF - TER, YOU SAY AF - TER AND I SAY AWF - TER;

24 Eb Eb7/D \flat Ab/C Abm/C \flat Eb/B \flat Cm F13 F7#5 B \flat 7 B \flat 7(b9)



All: EE - THER, EYE-THER, NEE-THER, NY-THER, LET'S CALL THE WHOLE THING OFF!
LAUGH-TER, LAWF-TER, AF - TER, AWF-TER, LET'S CALL THE WHOLE THING OFF!

28 Eb Cm9 Fm7 Abm/Bb Bb7 Eb Cm9

S/A: YOU LIKE PO-TA-TO AND I LIKE PO-TAH-TO, YOU LIKE TO-MA-TO AND
 YOU LIKE VA-NIL-LA AND I LIKE VA-NEL-LA, YOU, SA'S' - PA-RIL-LA AND

31 Fm7 Abm/Bb Bb7 Eb Eb7/Db Ab/C Fm7(b5)

All: I LIKE TO-MAH-TO, PO-TA-TO, PO-TAH-TO, TO-MA-TO, TO-MAH-TO!
 I SA'S'-PA-REL-LA; VA-NIL-LA, VA-NEL-LA, CHOC-'LATE, STRAW-B'RY!

34 Eb/G Ab Bb7 Ab/C Eb Am7(b5)

LET'S CALL THE WHOLE THING OFF! BUT OH!

37 D7 GM7 C7(b9) Fm7 Bb9

IF WE CALL THE WHOLE THING OFF, THEN WE MUST PART. AND

40 Am7(b5) D7 GM7 C7(b9) Fm7

OH! IF WE EV-ER PART, THEN THAT MIGHT BREAK MY

43 Bb9 Bb7 Eb Cm9 Fm7 Abm/Bb Bb7

HEART. S/A: { SO, IF YOU LIKE PA-JA-MAS AND I LIKE PA-JAH-MAS,
 SO, IF YOU GO FOR OYS-TERS AND I GO FOR ERS-TERS,

46 Eb Cm9 Fm7 Abm/Bb Bb7 Eb Eb7/Db

b: I'LL WEAR PA-JA-MAS AND GIVE UP PA-JAH-MAS. } All: FOR WE KNOW WE
 I'LL OR-DER OYS-TERS AND CAN-CEL THE ERS-TERS.

49 Ab/C Fm7(b5) Eb/G Ab Eb/Bb Ab6/C G7(#5) G7 C7(b9) C7

NEED EACH OTH-ER, SO WE BET-TER CALL THE CALL-ING OFF OFF.

52 Fm7 GM AbMAJ7/Bb Bb7 1. Eb Cb7 Bb9#5 2. Eb D7/Eb Eb6

LET'S CALL THE WHOLE THING OFF! OFF!